

Commercial



Architectural / Development / Infrastructure



Part of **crimsafe** Group

The Crimsafe Group is a collection of businesses with a global mission – to make the world a safer place.

We are committed to delivering safer ways for people to live, work, build and create communities.

Our solutions are safer in strength, quality and smarts so our customers can feel safer living in their homes and communities.

**Living
Safer**



CONTENTS

About Crimsafe Commercial	5
Range Benefits	6
Crimsafe Safety	8
Crimsafe Sustainability	12
Crimsafe Resilience	14
Crimsafe Products	18
What makes Crimsafe so strong?	20
Showcase 1 – Narbethong	22
Showcase 2 – Austin Health Hospital	24
Showcase 3 – Fish River Station	26
Showcase 4 – Geebung Railway Overpass	28
Specifications	30
Applications	32
Warranty	34



P4

CRIMS SAFE COMMERCIAL

CRIMSAFE COMMERCIAL – BUILT FOR MORE

Crimsafe provides a fusion of multiple product benefits in one screen.

If you're searching for project solutions that not only meet functional requirements but also drive sustainability outcomes and enhance the design and construction process, then look no further. Crimsafe screens are engineered to do just that – offering a multi-faceted design solution to fire attenuation, fall prevention, security, and protection from bushfires and cyclone debris.

Crimsafe brings all these benefits together in a single screen.

Whether you need a bespoke design or a solution that integrates seamlessly into existing plans, Crimsafe's versatility ensures it fits perfectly into any commercial project. Beyond its functionality, it's a sustainable choice that aligns with the evolving needs of modern construction.

For those who demand more from their materials, Crimsafe delivers sustainability, safety, and resilience.



Enhances the structural resilience of infrastructure in extreme weather conditions. Compliant with all relevant building and Australian Standards. Tested to BAL FZ and the requirements for Cyclone regions C and D.

- Bushfire protection
- Cyclone protection
- Hail protection
- Storm protection



Offers unparalleled security and safeguarding of assets, property and pedestrians. Rigorously tested and building code compliant, it combines custom form and function to deliver a broad, versatile solution.

- Balustrade infill panels
- Security/ asset/ property protection
- Fire/ heat attenuation
- Fall prevention



Delivers a versatile, environmentally responsible, and financially viable design solution for modern sustainability challenges. It provides a material solution to long term sustainability.

- Solar heat gain prevention
- Heat retention
- Airflow

RANGE BENEFITS

Crimsafe provides a fusion of multiple product benefits in one screen. As a building material it provides a unique solution for architects, engineers, designers, and builders – bringing uncompromising strength and limitless possibilities to every project.



BUSHFIRE PROTECTION

Rated to BAL FZ when used with a compliant window system.



PEDESTRIAN AND OCCUPANT SAFETY

Strong security, anti-throw, anti-ligature, anti-climb, anti-electrification and anti-streaming.



ENERGY EFFICIENCY

Improves energy rating of glass and windows and blocks up to 53% of solar heat gain.



STORM PROTECTION

Protection against the violent, debris-carrying winds of cyclones or severe storms with wind gusts up to 392 km/h.



FIRE ATTENUATION

Complies with the Building Code of Australia (BCA). Deemed to satisfy provisions and AS 1530.4-2014. Attenuates up to 59% of radiant heat.



CLIMATE CONTROL

Allows fresh air to flow and reduces heat attenuation without compromising on security.



CYCLONE PROTECTION

Deemed suitable for Cyclone regions C and D. Tested to withstand wind-borne debris impact up to 46 m/s, per AS 1170.2:2011.



FALL PREVENTION

Complies with AS 1170-2002 and NCC requirements. Rated to withstand up to 4.2 tonne of load pressure.



TRANSPARENCY

Provides transparency and enables natural light transmission without hindering views.



IMPACT PROTECTION

Complies with AS 5039-2008 and AS 5041-2003. Independently tested to withstand a single impact up to 1200 Joules.



PLANT AND ASSET PROTECTION

Protects against theft, break-in, vandalism, falling objects and wind-borne debris.



WILDLIFE RESISTANT

Effectively resists impact or penetration from vermin, flora, fauna and insects.

crimsafe
PROJECT BENEFITS



COST EFFECTIVE

Provides a cost-effective, light-weight and multi-faceted solution with low maintenance costs.



WARRANTY

8 or 10 years warranty for peace-of-mind on your investment.



FLEXIBLE FORM

Bespoke fabrication, custom colours and adaptable design for more tailored projects.



CUSTOM COLOURS

Colours to suit any project requirement to blend in or make a statement.



Crimsafe is proudly Australian Made



BALUSTRADE INFILL PANELS

FIRE / HEAT ATTENUATION

PLANT / ASSET /
PROPERTY PROTECTION

FALL PREVENTION

SECURITY

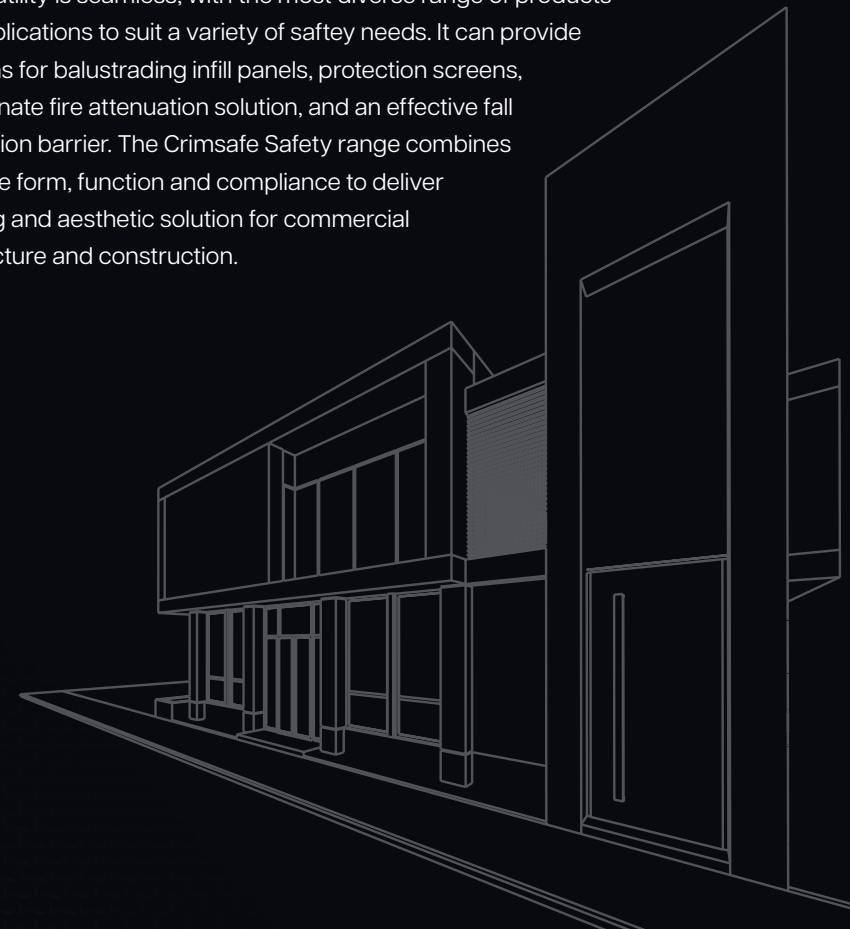
BUILT FOR BROAD, VERSATILE PROTECTION

Safety is what Crimsafe products are all designed to deliver on. But safety extends beyond just criminal intrusion. Crimsafe's Safety range offers products designed to protect buildings from insects, vermin, airborne pollutants and moisture intrusion. All while keeping floor to ceiling access points and balustrading secure to prevent falls and secure multi-storey structures.

The Crimsafe Safety range is the leading choice for architects, engineers and developers. Each product in the range has been rigorously tested and is fully compliant with Australian Standards and the National Construction Code (NCC) so you can be assured of the highest quality solution.

Its versatility is seamless, with the most diverse range of products and applications to suit a variety of safety needs. It can provide solutions for balustrading infill panels, protection screens, an alternate fire attenuation solution, and an effective fall prevention barrier. The Crimsafe Safety range combines bespoke form, function and compliance to deliver a strong and aesthetic solution for commercial architecture and construction.

COMPLIES WITH AS 5039-2008
AND AS 5041-2003. INDEPENDENTLY
TESTED TO WITHSTAND A SINGLE
IMPACT UP TO 1200 JOULES.



AUSTRALIA'S STRONGEST SCREEN SOLUTION



Our commercial screen offers a robust solution for pedestrian and occupant safety with features such as anti-throw, anti-climb, and anti-electrification. It resists impact or penetration from wildlife and protects plants and assets from theft, vandalism, and debris. The screen meets AS 5039-2008 and AS 5041-2003 standards, withstanding impacts up to 1200 Joules.

In addition, it enhances energy efficiency by improving window ratings and blocking up to 53% of solar heat gain, maintaining transparency for natural light while keeping a space secure. Compliant with AS 1170-2002, it can endure loads up to 4.2 tonnes and is customisable with bespoke fabrication options.

Suitable for cyclone regions, it withstands wind-borne debris up to 46 m/s to protect buildings, structures and occupants. It promotes climate control by allowing air flow and reducing heat attenuation, and meets fire attenuation standards, blocking up to 59% of radiant heat. This cost-effective, lightweight screen offers a comprehensive safety solution with low maintenance costs.

BENEFITS



PEDESTRIAN AND OCCUPANT SAFETY



FIRE ATTENUATION



FALL PREVENTION



PLANT AND ASSET PROTECTION



WILDLIFE RESISTANT



PROJECT
Geebung Railway Overpass

[READ MORE](#)





crimsafe
SUSTAINABILITY

BUILT FOR THE ENVIRONMENT, DESIGNED FOR INGENUITY

Sustainability considerations are fundamental in every build. Crimsafe's Sustainability range is designed with this in mind, manufactured to conserve heat and energy, provide sound and light resistance, all while meeting fire and security requirements. It's the building solution that fuses multiple product benefits into one screen.

For architects and engineers looking to solve design challenges, the Crimsafe Sustainability range delivers a versatile, environmentally responsible and financially viable solution.

This range has the potential to provide long-term client savings and reduce reliance on climate-control systems.

The elevated design of the product also allows for natural light and airflow infiltration, reducing utility operation costs. When applied to windows, these screens may decrease necessary glass thickness, promote energy efficiency, and serve as an alternative fire attenuation solution, mitigating the need for expensive, heavy water-based fire drenching systems.

BENEFITS



ENERGY
EFFICIENCY



CLIMATE
CONTROL



TRANSPARENCY





 **crimsafe**
RESILIENCE

BUILT FOR PERFORMANCE UNDER EXTREME CONDITIONS

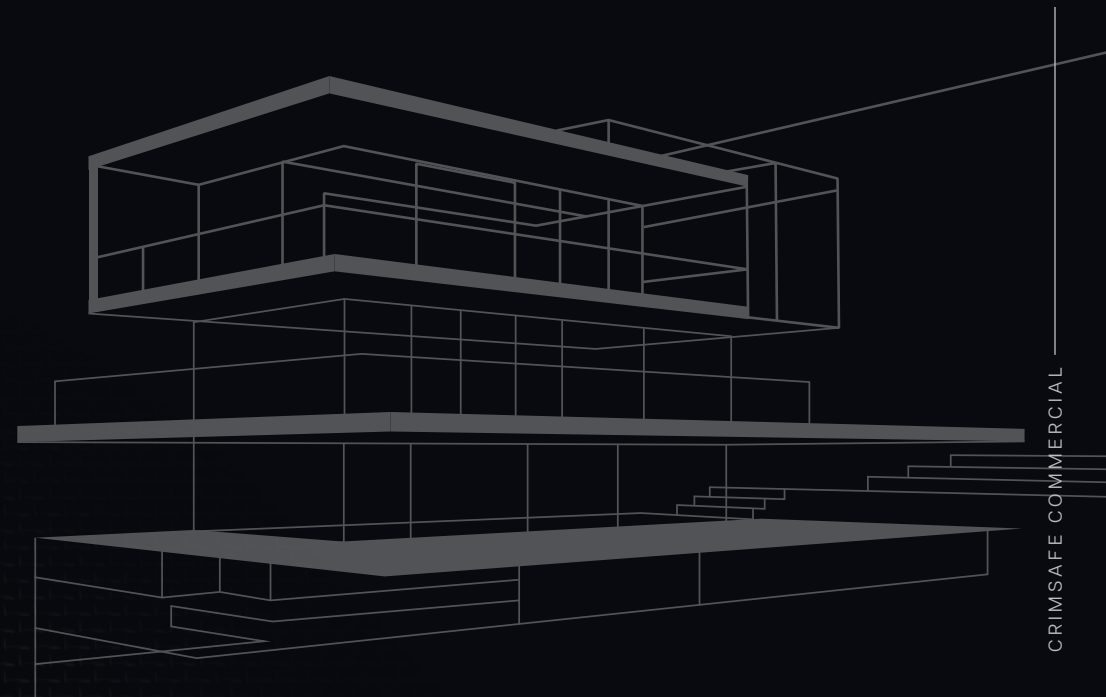
Key to the design, maintenance and restoration of buildings and infrastructure is its ability to absorb or avoid damage without suffering complete structural failure. That's why Crimsafe's Resilience range is manufactured for the highest standards of cyclone, bushfire and storm protection.

The Crimsafe Resilience range is designed to comply with AS 3959-2018 requirements for homes in bushfire-prone areas. The range has been tested to endure the most severe Bushfire Attack Levels, including BAL FZ.

Defending against ember attacks, reducing radiant heat, and preserving glass from debris, the Crimsafe Resilience range integrates seamlessly into architecturally sensitive projects, ensuring aesthetic and structural integrity.

Specific screens within this range also comply with Cyclone Debris Screening, meeting standards for Cyclone regions C and D, withstanding wind gusts of up to 392 km/h. These screens are a robust barrier, safeguarding property against debris, damage and vandalism.

WITHSTANDS WIND GUSTS
OF UP TO 392 KM/H
WITHOUT BLOCKING OUT
FRESH AIR AND BREEZES





Our Resilience range is engineered for comprehensive protection and efficiency. Rated to BAL FZ, it offers bushfire protection when paired with a compliant window system. The screen is also ideal for storm protection, suitable for Cyclone regions C and D, and tested to withstand wind-borne debris impacts up to 46 m/s as per AS 1170.2:2011 standards. It ensures transparency, allowing natural light to pass through while providing protection and unobstructed views.

What sets these screens apart is their flexibility in both form and function. Custom fabrication allows for a perfect fit, while a variety of colours and adaptable solutions cater to individual needs. As a result, Crimsafe screens are an ideal choice for residential, community, regional, and remote housing projects, ensuring safety and security in fire, cyclone and storm prone areas. It is cost-effective, offering a lightweight, low-maintenance option designed to endure various elements.

BENEFITS



BUSHFIRE PROTECTION



CYCLONE PROTECTION



STORM PROTECTION



IMPACT PROTECTION

BUSHFIRE PROTECTION



FOUR LEVELS OF COMMERCIAL APPLICATION

crimsafe / First



Crimsafe First sets the standard for all our screen solutions. It features a cutting-edge 0.8mm mesh that complies with all Australian Standards to deliver a solution for occupant safety, plant and asset protection, security, fall prevention, energy efficiency and more.

Rigorously tested to withstand impacts of up to 400 Joules, its industrial aesthetic seamlessly blends strength and style to deliver a cost-effective, robust and practical safety and security solution for commercial projects. Supported by an eight-year warranty, Crimsafe's innovative design ensures exceptional entry-level performance, reinforcing your project's resistance and resilience against potential threats.



crimsafe / Regular



Crimsafe Regular is the original Crimsafe screen solution. Its industrial strength offers an ideal solution for pedestrian safety, plant and asset protection, security and more.

Rigorously tested to withstand a single impact of 550 Joules, it surpasses the Australian Standard for security screens amongst other applications and provides unparalleled protection for aged care and residential projects.

This security system blends durability with design and a range of colour options, making it a reliable choice for safeguarding buildings and enhancing architectural aesthetics.

crimsafe / Ultimate



Crimsafe Ultimate is the premium choice for security screens, exceeding Australian Standards and tested for a single impact of up to 750 Joules. As our most extensive product range, Crimsafe Ultimate is an ideal solution for balustrading, pedestrian and occupant safety, plant and asset protection, security, fall prevention, energy efficiency and more. It is our most versatile solution with applications across the Sustainability, Resilience and Safety ranges. With 0.9mm, 304 structural grade stainless steel mesh and its Screw-Clamp™ system, it offers unmatched strength and boasts impact strength up to 40% stronger than Crimsafe Regular. Beyond security, Crimsafe Ultimate maintains aesthetic integrity with a range of colours that make it the architect's choice for a versatile range of projects.



crimsafe / Commercial



Crimsafe Commercial represents the apex of security fabrications, seamlessly blending industrial aesthetics with unmatched strength to deliver a high-security solution for prisons, at-risk shop fronts, sporting clubs, military and defence facilities, plant equipment, valuable assets and sensitive spaces.

Rigorously tested to withstand a single impact of up to 1200 Joules – far stronger than the Australian Standard – Crimsafe Commercial is the epitome of security, safety and more.

Beyond security, Crimsafe Commercial delivers pleasing aesthetics in a range of colours that make it the ideal choice for all projects.

WHAT MAKES CRIMSAFE SO STRONG?

High durability powder coated mesh and extrusion

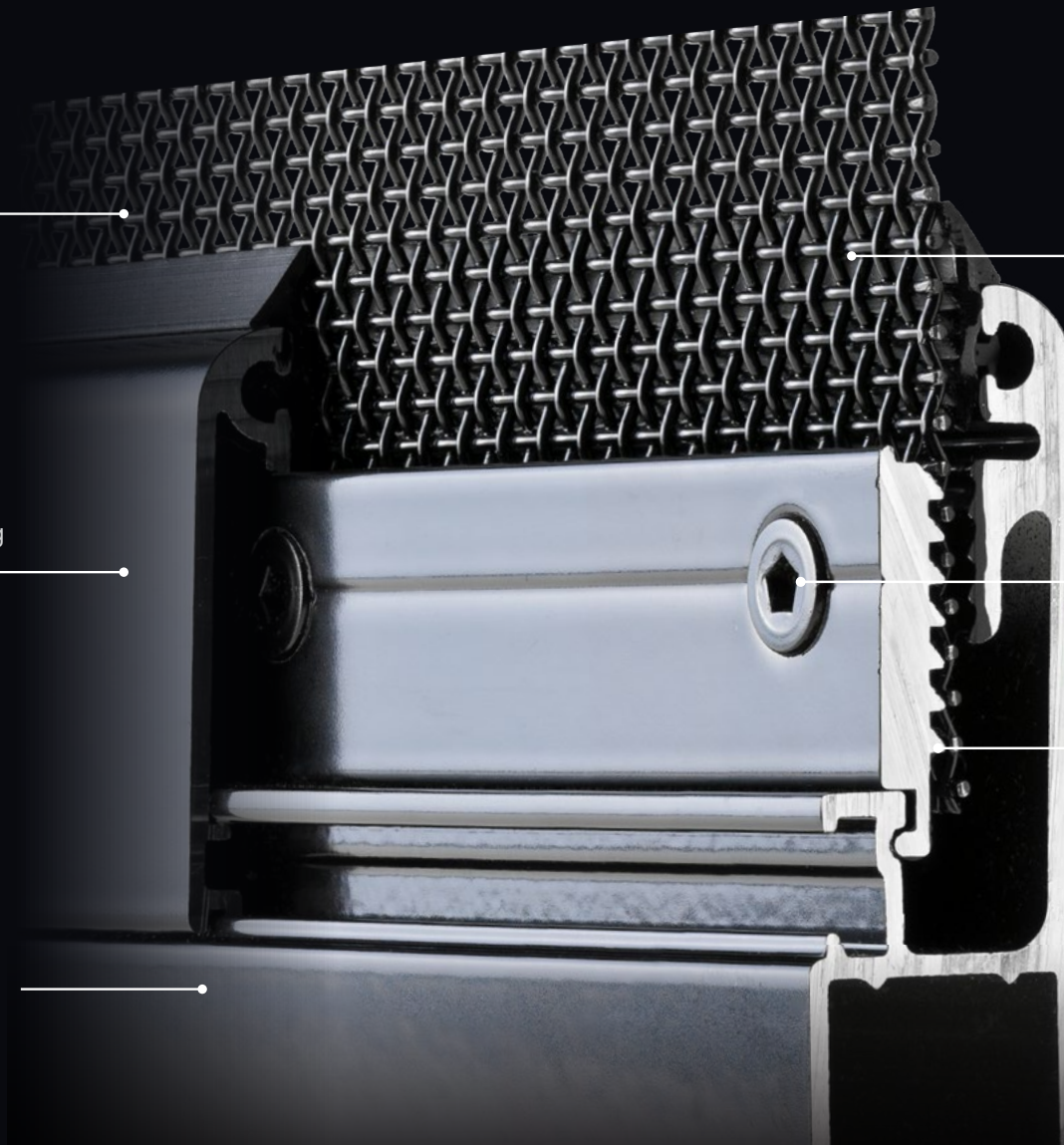
304 structural-grade Tensile-Tuff® mesh

Clip-on cover protects screws from tampering and corrosion

Screw-Clamp™ fastening system

Screw-Clamp™ hook

Thick aluminium frame



ONE SCREEN. MANY BENEFITS.

Crimsafe provides a fusion of multiple product benefits in one screen.

TENSILE-TUFF® MESH

Crimsafe's Tensile-Tuff® mesh provides a wide range of features that make it suitable for almost any application. Our specially developed Crimsafe Tensile-Tuff® mesh uses 0.9mm 304 structural-grade stainless steel which is 26% thicker on the cross section than woven mesh products. Woven to Standards ISO 9044/ ASTM E2016:06.

UNIQUE FASTENING SYSTEM

Crimsafe's exclusive Screw-Clamp™ technology secures the Tensile-Tuff® mesh to the frame using tamper-resistant screws and clamps to form a vice-like grip. This technology allows Crimsafe to withstand tremendous force by absorbing and dispersing impact around the frame. Security-head screws penetrate the clamp, mesh and into the screen frame. Screws are spaced every 125mm, 62.5mm or 25mm staggered (Regular, Ultimate or Commercial systems respectively).

SURFACE COATINGS

Mesh and extrusion feature a high durability powder coat. Powder coat application as per AS 4506:2005 Metal Finishing for thermoset powder coatings.

EMERGENCY EXIT

Crimsafe Safe-S-Cape for emergency exit windows and doors. Featuring keyless exit system for ease of use, without compromising security requirements.

COMMERCIAL-GRADE STRENGTH

For high-risk environments requiring exceptional strength, Crimsafe commercial-grade is unmatched in the industry. Tamper-resistant screws are spaced every 25mm in a staggered formation. Withstands single impact of 1200 Joules – 12 times more than the impact required by Australian Standards.

Case Study: Crimsafe Resilience

A SAFE HAVEN FOR THE LOCAL COMMUNITY



OVERVIEW

At the gateway to the Murrindindi Shire (close to Victoria's Yarra Valley) lies the impressive Narbethong Community Hall. Architecturally designed to represent the history and uniqueness of Narbethong – an 'old timber town' – the fire-resistant hall rose from the ashes of the 2009 Black Saturday fires and was reopened in 2011. Combining natural timber tones with contrasting black furniture and fixtures, the interior of the hall reflects a modern, sophisticated look and feel with floor-to-ceiling windows showcasing stunning views of the surrounding landscape.

CHALLENGE

It was the exterior of the building that proved challenging for architects, as new building regulations established after the fires stipulated that, due to its proximity to a bushfire reserve, the hall must meet a high Bushfire Attack Level (BAL) standard to ensure its longevity and protection.

SOLUTION

Crimsafe security screens were specified to provide the necessary protection from bushfires, ember attack and wind-driven debris, and were subsequently fitted to the outside of all the double-glazed windows. Crimsafe was the undeniable choice due to its exceptional strength and resistance to bushfire attack. BVN Architecture specified a solution that would not impede views from the hall's interior, harmonise with the overall design and blend with its surrounding landscape while also complying with the building code requirements.

PROJECT

Narbethong Community Hall

READ MORE







Case Study: Crimsafe Safety

CREATING A SAFE, HEALING ENVIRONMENT FOR MENTAL HEALTH PATIENTS



OVERVIEW

Based in Melbourne's northeastern suburb of Heidelberg, the Austin Health Short Stay Observation Unit and Psychiatric Assessment and Planning Unit provides dedicated mental health care and acute care to patients with expected stays of less than 24 hours. Numerous mental health studies advocate for the inclusion of green spaces in patient care environments. Access to open, secure areas with fresh air and natural light has been shown to facilitate the recovery of mental health patients.

CHALLENGE

The project designers specified the importance of creating an outdoor sanctuary that fosters relaxation, reduces stress, and enhances mental stimulation while ensuring the necessary level of security, safety, and compliance with building codes.

SOLUTION

Crimsafe was the obvious choice due to its exceptional strength, transparency and security features, providing unparalleled security and protection for the hospital and allowing patients the space they need for recovery while safeguarding them from harm. This solution offered energy efficiency benefits, assisting the facility in reducing its carbon footprint by eliminating the need for temperature control within the space. This thoughtful approach challenges conventional perceptions of hospitals and mental health facilities, enhancing patient experience and community perception.

PROJECT
Austin Health Hospital

READ MORE



Case Study: Crimsafe Sustainability

CREATING SUSTAINABLE, COMFORTABLE AND EFFICIENT ACCOMMODATION



OVERVIEW

Fish River Station, nestled in the Northern Territory as part of the national reserve system, is a testament to preserving native flora and fauna for future generations. Located some 3,500km from Adelaide, this station serves as a vital meeting ground for the indigenous communities, employing First Nations Rangers from the Daly River area. The Indigenous Land and Sea Corporation aimed to restore and upgrade the existing Ranger accommodation, preserving original features where possible, but designing new features to improve the living conditions of the Rangers while on country.

CHALLENGE

The project presented a unique set of challenges to the design team tasked with improving and upgrading the existing accommodation at the Fish River Station. The existing accommodation structures, rudimentary in nature with mere floors, a roof and no walls, demanded innovative solutions to address the harsh climatic realities of the Northern Territory.

SOLUTION

These versatile screens offer unparalleled protection against bushfires and insects while facilitating natural airflow. They align with passive design principles to reduce the need for artificial cooling systems. The Patio Enclosure profile boasts both strength and aesthetic appeal and allows the fabrication of larger panels without compromising structural integrity. The project was a collaborative effort aimed at retrofitting the existing structures, incorporating essential features such as insect screening, enhanced privacy, and passive design principles to mitigate reliance on air conditioning systems.

PROJECT
Fish River Station

READ MORE





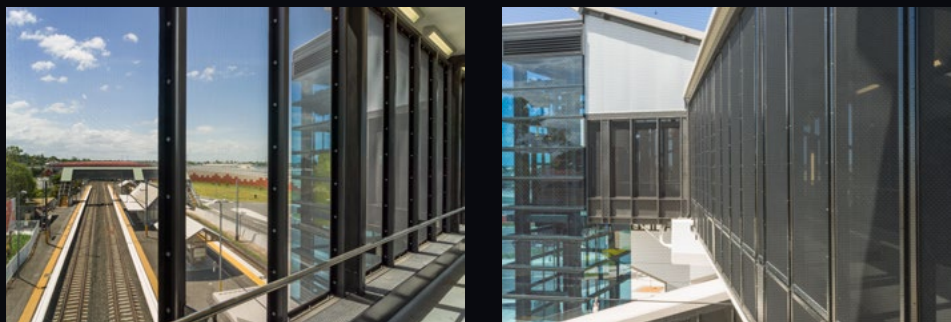


STAY OFF THE TRACKS! OR GET A FINE.

Great Small Rooms
+3865 2440

Case Study: Crimsafe Safety

ENHANCING PUBLIC SAFETY AND REDUCING MATERIAL COSTS



OVERVIEW

The Geebung Overpass (GO) Alliance, in collaboration with Queensland Rail, completed the Robinson Road Open Level Crossing Replacement Project. This \$199 million project featured Crimsafe security screens for the pedestrian overpass, to enhance public safety.

SOLUTION

The installation of Crimsafe screens addressed various safety aspects and set new standards for railway bridges and pedestrian overpasses. Crimsafe's anti-electrification, anti-throw, and anti-streaming qualities protect the public from electrocution hazards from train wires, resulting in reductions in overpass height requirements and material requirements.

Additionally, high visibility through Crimsafe screens in well-lit environments ensures commuters' safety by allowing them to see and be seen clearly. The project required the delivery of 300 custom screens, with 80% featuring raked, cut-out, or out-of-square frames. Precise installation timing over railway lines posed a challenge.

The project resulted in a change of specification requirements in similar projects and established a benchmark for public safety.

PROJECT
Geebung Railway Overpass

[READ MORE](#)



SPECIFICATIONS

FEATURES	Crimsafe First	Crimsafe Regular	Crimsafe Ultimate	Crimsafe Commercial
Strength	up to 400 Joules*	up to 550 Joules*	up to 750 Joules*	up to 1200 Joules*
Fastening Method	tamper resistant screws, accessible from one side	tamper resistant screws, accessible from one side	x2 more tamper resistant screws, accessible from one side, hidden by a cover	x4 more tamper resistant screws, accessible from one side
Warranty	8 years^	10 years^	10 years^	10 years^
Mesh	0.8mm Tensile-Tuff® 304 Structural grade stainless steel woven mesh	0.9mm Tensile-Tuff® 304 Structural grade stainless steel woven mesh	0.9mm Tensile-Tuff® 304 Structural grade stainless steel woven mesh	0.9mm Tensile-Tuff® 304 Structural grade stainless steel woven mesh
Frame Colours	available in any colour from the Dulux or Interpon colour ranges			
RESILIENCE RANGE				
Bushfire Protection		BAL FZ#	BAL FZ#	BAL FZ#
Cyclone Debris Protection			approved for Cyclone Regions C&D**	approved for Cyclone Regions C**
Hail Protection	✓	✓	✓	✓
Corrosion Resistance (Salt Spray and Prohesion Accelerated Test)	3,000 Hours	3,000 Hours	3,000 Hours	3,000 Hours
SUSTAINABILITY RANGE				
Solar Heat Gain Prevention	✓	reduces up to 53%	reduces up to 53%	reduces up to 53%
UV Protection	✓	filters up to 62% of UV radiation	filters up to 62% of UV radiation	filters up to 62% of UV radiation
WERS Rated	✓	4.5 stars cooling, 3 stars heating	4.5 stars cooling, 3 stars heating	4.5 stars cooling, 3 stars heating
Airflow	✓	allows up to 53% of airflow	allows up to 53% of airflow	allows up to 53% of airflow
Light Transmission	✓	visible light reduction of 55%	visible light reduction of 55%	visible light reduction of 55%
SAFETY RANGE				
Balustrading AS/NZS 1170.1-2002 (Test report # 4208-2001-2)			load tested to 4.2 tonnes	load tested to 4.2 tonnes
Fire Attenuation AS 1530.4.2014 (Test report # 41646400)		attenuates up to 59% of radiant heat	attenuates up to 59% of radiant heat	attenuates up to 59% of radiant heat
Fall Prevention AS 5203:2016 (Test report # 2016-039-S1)	✓	✓	✓	✓
Dynamic Impact Protection AS 5039.3.2023 (Test report # AZT0088.24)	SL100	SL200	SL200	SL200
Knife Sheer AS 5041 (Test report # AZT3044.17)	✓	✓	✓	✓
Jemmy Resistant AS 5039/5041-2003 (Test report # 11335)	✓	✓	✓	✓
Pull Test AS 5039/5041-2003 (Test report # 11335)	✓	✓	✓	✓

* Singular impact test. Exceeds Australian Standard (AS5039) Impact Testing. ** Region D must have 1.2mm Mesh. Tested up to 46m/s.

When used with a compliant glass window system. BAL FZ is the highest bushfire attack level. ^Subject to Crimsafe Warranty Terms & Conditions



APPLICATIONS

FEATURES	Crimsafe First	Crimsafe Regular	Crimsafe Ultimate	Crimsafe Commercial
RESILIENCE RANGE				
Protection from bushfires		✓	✓	✓
Protection from cyclone borne debris			✓	✓
Protection from storm borne debris		✓	✓	✓
Protection from hail	✓	✓	✓	✓
SUSTAINABILITY RANGE				
Reducing solar heat gain	✓	✓	✓	✓
Resident/Occupant habitation	✓	✓	✓	✓
Building efficiency	✓	✓	✓	✓
Improved airflow/ventilation	✓	✓	✓	✓
SAFETY RANGE				
Access solution	✓	✓	✓	✓
Emergency exits (Safe-S-Cape)	✓	✓	✓	
Confined spaces		✓	✓	✓
Anti-climb		✓	✓	✓
Vermin/animal resistance	✓	✓	✓	✓
Insect protection	✓	✓	✓	✓
Security/Asset/Property protection	✓	✓	✓	✓
Resident/Occupant safety	✓	✓	✓	✓
Pedestrian safety		✓	✓	✓





A WARRANTY MADE TO SUIT ALL CONDITIONS

When you invest in Crimsafe, you invest in Australia's strongest security screens. That is why we back the strength, durability and quality of our products with a strong 8 or 10 year warranty as standard.

Hardware and accessories may be independently covered by the warranty conditions of the relevant manufacturer or supplier.

For complete terms and conditions visit crimsafe.com.au/commercial.





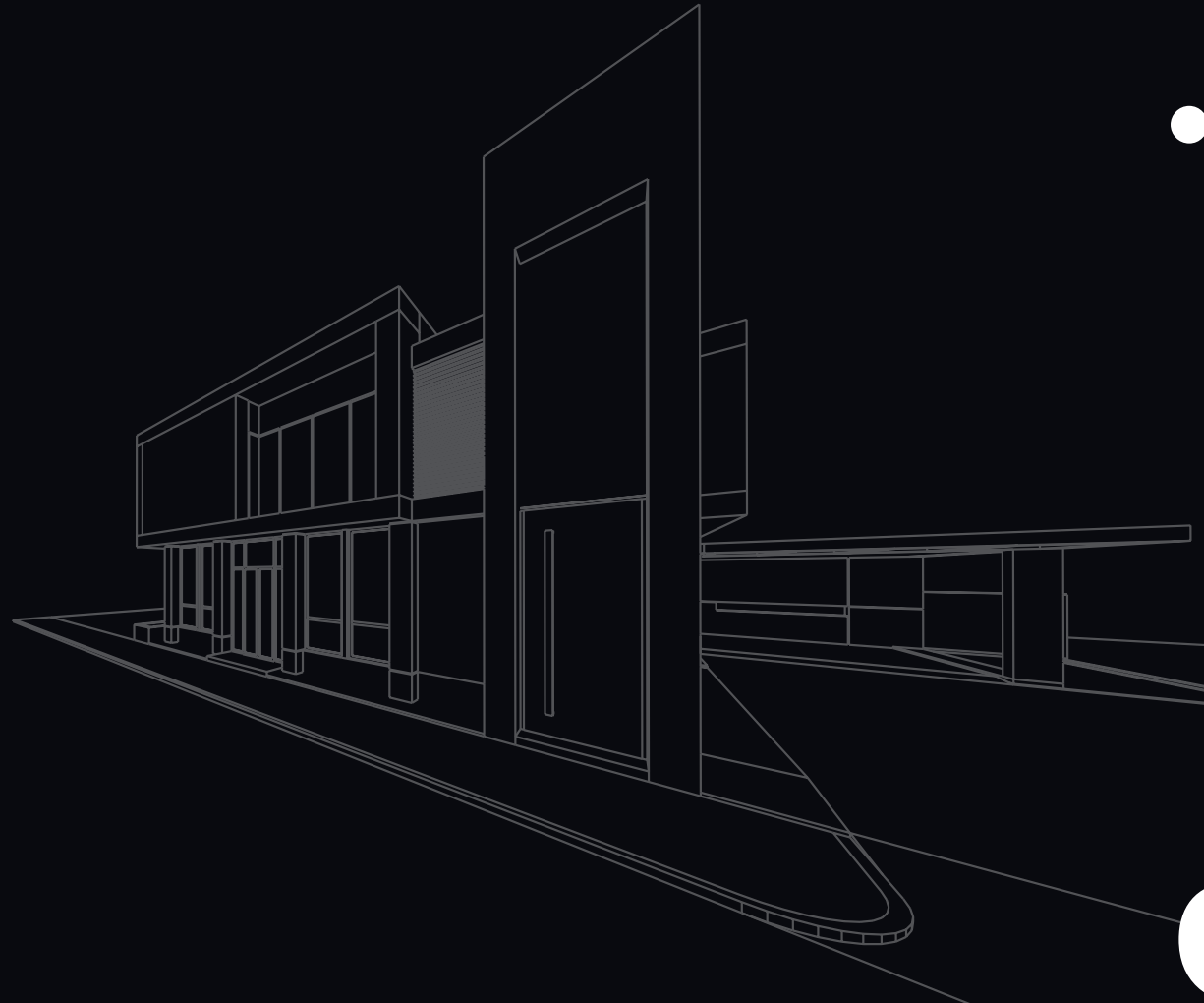
Security
Solutions

Residential / Commercial

Part of **crimsafe** Group

Crimsafe Security Systems Pty Ltd
Toll Free: 1800 274 672 Email: projects@crimsafe.com.au

crimsafe.com.au/commercial



Commercial